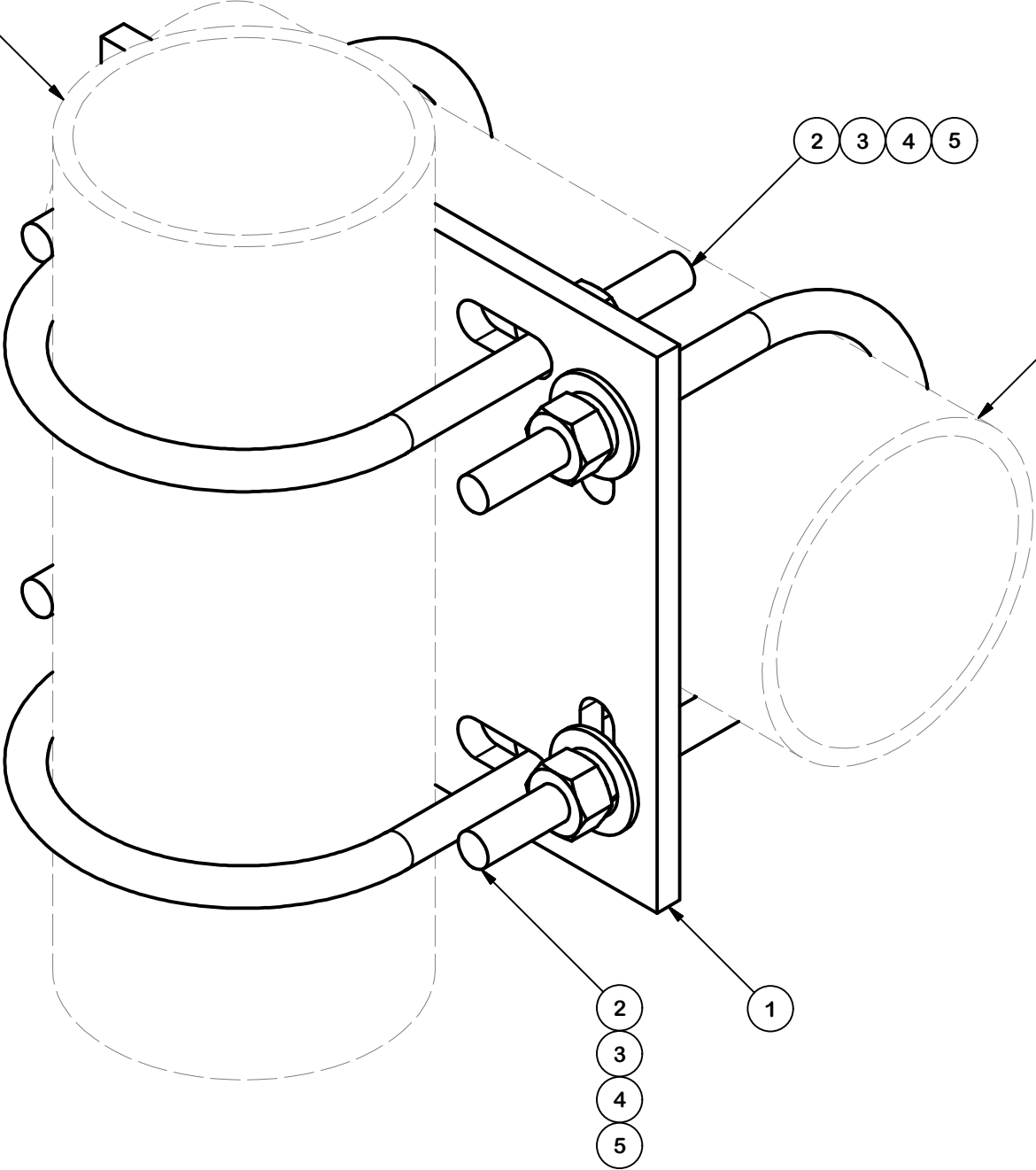


PARTS LIST						
ITEM	QTY	PART NO.	PART DESCRIPTION	LENGTH	UNIT WT.	NET WT.
1	1	SCX3	CROSSOVER PLATE	9 1/4 in	7.19	7.19
2	4	X-UB1458	1/2" X 4-5/8" X 7" X 3" U-BOLT (HDG.)		0.97	3.89
3	8	G12FW	1/2" HDG USS FLATWASHER	3/32 in	0.03	0.27
4	8	G12LW	1/2" HDG LOCKWASHER	1/8 in	0.01	0.11
5	8	G12NUT	1/2" HDG HEAVY 2H HEX NUT		0.07	0.57
					TOTAL WT. #	12.03

4-1/2" O.D. ANTENNA PIPE
(ORDERED SEPARATELY)



4-1/2" O.D. PIPE
(ORDERED SEPARATELY)

TOLERANCE NOTES

TOLERANCES ON DIMENSIONS, UNLESS OTHERWISE NOTED ARE:
SAWED, SHEARED AND GAS CUT EDGES (± 0.030")
DRILLED AND GAS CUT HOLES (± 0.030") - NO CONING OF HOLES
LASER CUT EDGES AND HOLES (± 0.010") - NO CONING OF HOLES
BENDS ARE ± 1/2 DEGREE
ALL OTHER MACHINING (± 0.030")
ALL OTHER ASSEMBLY (± 0.060")

PROPRIETARY NOTE:
THE DATA AND TECHNIQUES CONTAINED IN THIS DRAWING ARE PROPRIETARY INFORMATION OF VALMONT INDUSTRIES AND CONSIDERED A TRADE SECRET. ANY USE OR DISCLOSURE WITHOUT THE CONSENT OF VALMONT INDUSTRIES IS STRICTLY PROHIBITED.

DESCRIPTION		
4-1/2" X 4-1/2" CROSSOVER KIT		

CPD NO.		DRAWN BY	ENG. APPROVAL
		CMFL 7/2/2020	8/19/2020
CLASS	SUB	DRAWING USAGE	CHECKED BY
87	02	CUSTOMER	BMC 8/19/2020

SITE

PRO

1

A valmont COMPANY

Locations:
New York, NY
Atlanta, GA
Los Angeles, CA
Plymouth, IN
Salem, OR
Dallas, TX

Engineering
Support Team:
1-888-753-7446

PART NO.	SCX34-K
DWG. NO.	SCX34-K